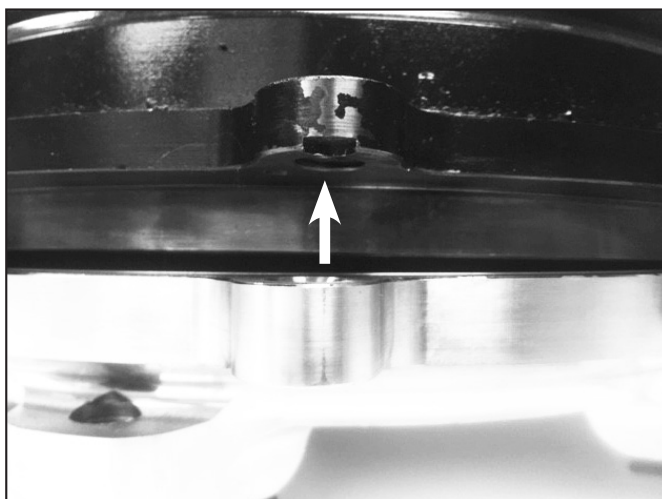


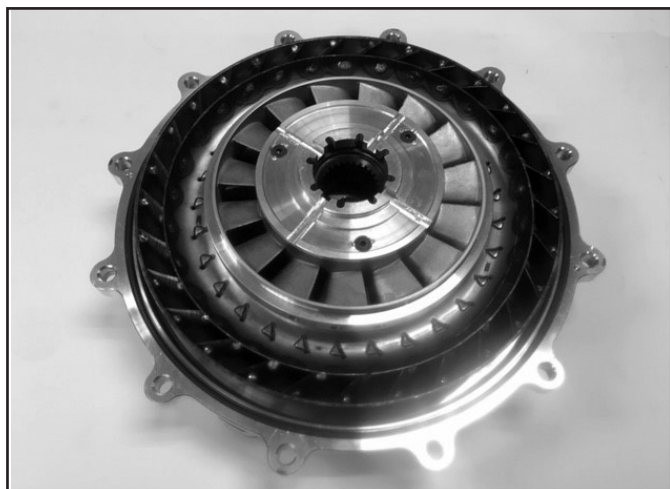
STATOR SWAP FOR ATI BOLT TOGETHER CONVERTERS



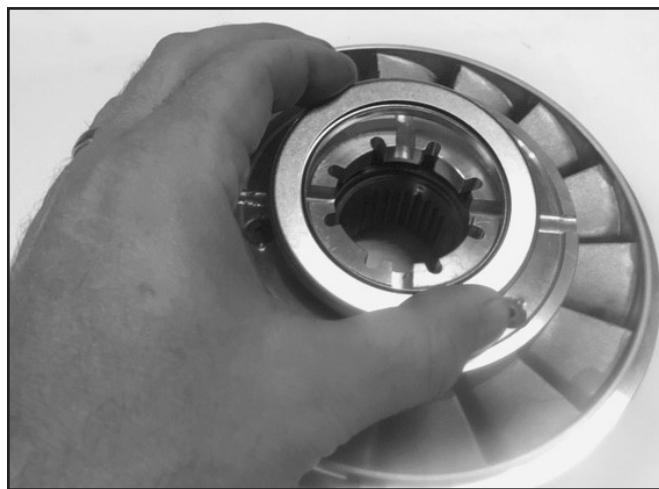
STEP 1 - Remove all 12 bolts, nuts, and washers from the converter.



STEP 2 - Locate the screw driver tabs. (See arrow.)

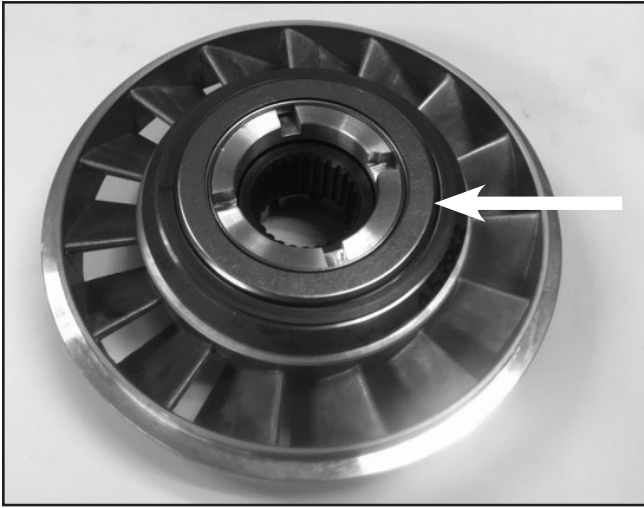


STEP 3 - Remove the pump.



STEP 4 - Remove the stator from the converter and make note of an "A" stamped on one side and a "B" stamped on the other. There will be an "A" and "B" on each cap and on the stator itself. The "A" side will correspond to the engine side and the "B" will correspond to the transmission side when the stator is installed in the converter.

Remove the "A" side bearing and place it to the side. Make a note on which way it will be reinstalled on the "A" side of the new stator.



STEP 5 - Remove the "B" side bearing following the same procedure described in Step 4. (See arrow)



STEP 6 - Using a 1/8" allen key or socket, remove the (3) 10-32 x 5/8" allen head screws from the aluminum stator cap on the "B" side of the stator. Remove the cap itself. You may need to use an impact-type screw driver with an 1/8" allen bit. Place the "B" side aluminum cap to the side.



STEP 7 - Flip the stator over and remove the snap-ring holding the "A" side aluminum stator cap in place. Set the stator cap and snap ring to the side.



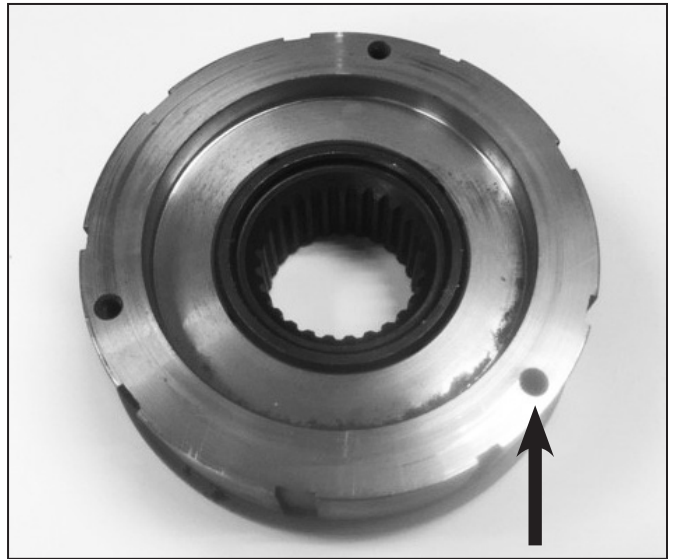
STEP 8 - DO NOT remove the second snap ring under the "A" stator cap as indicated by the arrow.



"A" side stator cap.



STEP 9 - Flip the stator over and press the diode out of the stator from the "B" side, having it exit the stator from the "A" side.



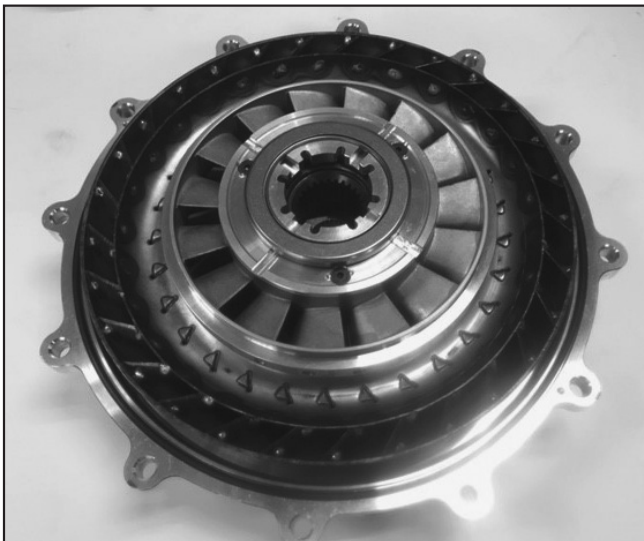
STEP 10 - Slide the diode into the "A" side of the new stator. Install the "A" side cap and snap ring.

Flip the stator over to the "B" side and install the "B" side cap, aligning the 3 screw holes in the cap with the corresponding holes in the diode assembly. (See arrow)

Using a drop of green 609 Loctite, reinstall the 3 flat head screws, and torque to 29 in/lbs.

Reinstall the "B" side bearing.

Reinstall the "A" side bearing.



STEP 11 - Reinstall the completed stator assembly back in the converter with the "B" side facing you (pump side of the converter).



STEP 12 - There are 2 O-rings in the cover - one on the inner lip facing in and one on the top facing up. They are different sizes. The smaller of the o-rings goes on the inner lip. Lube these with a light coat of transmission oil.

Reinstall the pump making sure not to roll the inner O-ring out of its groove. Install the pump to cover bolts and washers.



DO NOT reuse the old nuts. Always replace with a new lock-nuts. Torque the nuts to 45 ft./lbs.